



warringtonfire

bre



certifire



CS/ KAFC-H/ R3 OCT 2020



Kent

Smoke and Fire Curtains

KENT AUTOMATIC FIRE CURTAIN - HORIZONTAL

CUTSHEET



DESCRIPTION

The Kent Horizontal Curtain is a fire rated assembly designed to function as a horizontally deploying opening protective.

The system is activated upon receipt of a signal from the:

- General Fire Alarm
- Smoke Detection System
- BMS Module

The system is driven by a 24V DC motor arrangement or 230V AC motor subject to size. If a 230V motor is selected it should be connected to an independant UPS system in case of power failure.

PRODUCT ADVANTAGES

- Lightweight & Compact: Reduced headroom requirement.
- Flexible Design Solution: Meeting Bespoke requirements.
- Improved Aesthetics
- Mounting Options: Above the slab or Under the slab.

SYSTEM TESTED IN ACCORDANCE WITH

- System tested in accordance with BS EN 1634 Part 1 for up to 240 minutes.
- System tested in accordance with UL 10D for 180 minutes
- Compliance with NFPA 80
- Method of Test NFPA 252
- Fabric: VWG690
- Stitch Load Test: Fabric tested to 500Pa of Pressure.
- Fabric Impact Test: Fabric tested in accordance with BS 5234-2 to double severe duty

SYSTEM COMPONENTS

- Headbox: The steel headbox houses the roller, fabric and motor within the casing creating a small compact package that remains virtually invisible
- Fabric: Woven Fiberglass wire reinforced fabric with individual panels stitched and hemmed using stainless steel thread
- Bottom Bar: The bottom bar is 3mm GI sheet material which provides opening and holding of the fabric in a conditioned way.
- Side guide: During Deployment, slim steel side guides fabricated from 2 mm GI rolled Profile prevent derailment of the fabric during operation ensuring integrity of the system when faced by positive or negative pressures of fire.



Horizontal Fire Curtain



warringtonfire

bre



certifire

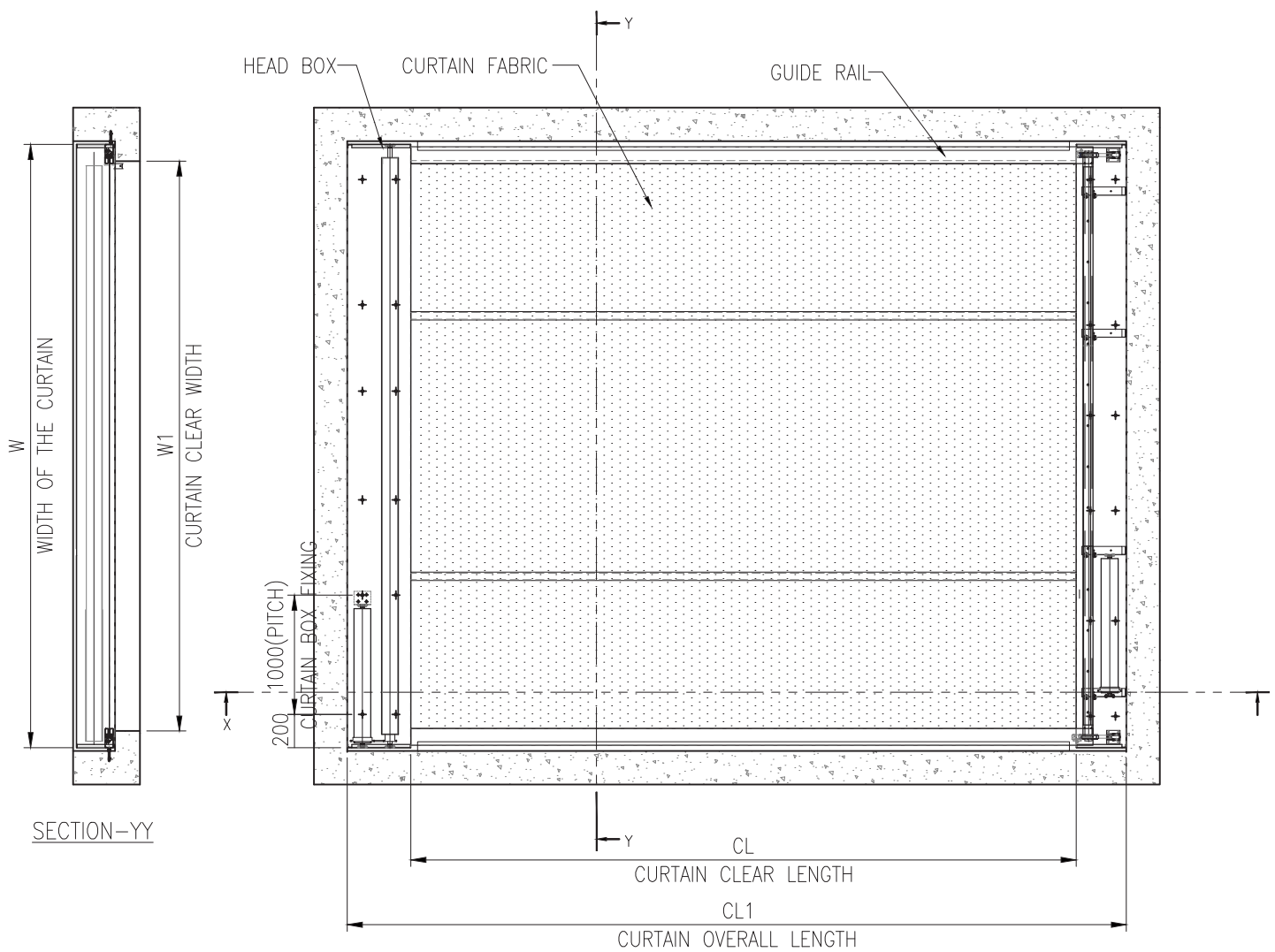
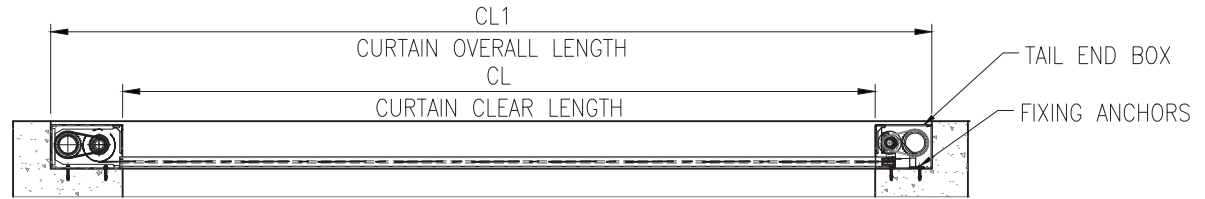


CS/ KAFC-H/ R3 OCT 2020

KENT AUTOMATIC FIRE CURTAIN - HORIZONTAL

**Kent**
Smoke and Fire Curtains

CUTSHEET



CURTAIN PLAN